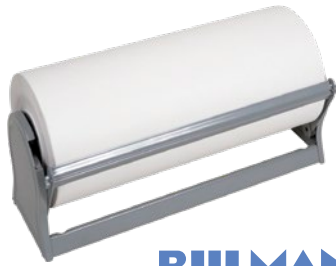


SHIPPING SUPPLIES

STANDARD ALL-IN-ONE PAPER CUTTERS

- Unit smoothly dispenses light to heavy weight kraft and other papers
- Cuts evenly using either side of a double edged spring load blade
- Holds up to 9" diameter rolls
- Rugged all steel, grey powder coat finish
- Can be wall mounted, countertop or under counter
- Rubber cushions to protect surface



BULMAN

Model No.	Paper Width"	Price/Each
PC612	18	
PC613	24	
PC614	30	
PC615	36	
PC981	48	

VERTICAL PAPER CUTTERS

- Heavy-duty welded construction
- For single rolls
- Designed to accommodate paper roll widths between 15" and 48"
- Holds up to 9" diameter rolls
- Features a spring-loaded blade for fast, even cuts
- Automatic blade locking device for easy roll change
- Optional casters available
- Light grey powder coat finish



BULMAN

Model No.	Paper Width"	Price/Each
PC640	15, 18 & 20	
PC641	24 & 27	
PC642	30 & 36	
PC985	40 & 48	

PORTABLE RAZOR-X CUTTERS

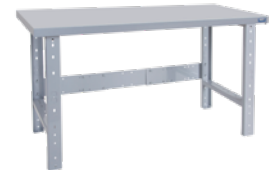
- Fast, sure dispensing and cutting of packing materials such as single-face corrugated or thin foams
- Constructed of heavy-duty, tubular steel to hold one or more rolls of material
- Rests on heavy-duty casters for easy mobility
- Wheel locks to assure stability
- Accommodates rolls up to 40" in diameter
- Hold-down strips prevent rollback of material
- Select a rotary shear cutter for heavier materials
- Shipped knocked down



BULMAN

Model No.	Roll Width"	Price /Each
PC931	24	
PC932	36	
PC933	48	
PC934	60	

WORKBENCHES



Model No.	Size"	Wt. lbs.	Price /Each
STEEL - WOOD FILL			
FF672	36 x 72	164	
FF671	36 x 60	156	
FF670	30 x 72	166	
FF669	30 x 60	146	
FF667	24 x 60	110	
LAMINATED WOOD			
FF658	36 x 72	171	
FF657	36 x 60	149	
FF656	30 x 72	150	
FF655	30 x 60	130	
FF653	24 x 60	106	

Model No.	Size"	Wt. lbs.	Price /Each
SHOP TOP			
FF679	36 x 72	171	
FH877	36 x 60	157	
FF677	30 x 72	150	
FF676	30 x 60	133	
FH878	24 x 60	111	
PLASTIC LAMINATE			
FF665	36 x 72	171	
FH879	36 x 60	152	
FF663	30 x 72	150	
FF662	30 x 60	133	
FH880	24 x 60	108	

MULTIPLE ROLL STANDS

- Increases cutting efficiency and productivity
- Allows you to store rolls of different diameters measuring up to 72" high
- Supplied with one roll bar and brackets that bolt to and adjust along the uprights

CONSISTS OF:

- 3- F1332 Roll Bars
- 1- PA220 Cutter Bar
- 1- PE206 Multiple Roll Stand
- 1- FF347 Sorter Support Bracket (set of 2)

CALSTONE INC.

Your Furniture Solutions Partner

Model No.	Dimensions	Wt. lbs.	Price /Each
PE207	59" W x 24" D x 84 1/2" H	76	



DESCRIPTION OF COMPONENTS:

Roll Bar:

Used to hold your packaging material. Comes complete with mounting brackets. 64" L. Wt.: 5 lbs.

Model No. F1332
Price/Each \$

Cutter Bar:

Used to cut standard packaging material, paper, bubble, plastic and some foam. 62". Assembly bar with a 48" material width. Wt.: 6 lbs.

Model No. PA220
Price/Each \$

Multiple Roll Stand:

Comes complete with side frames and base only. 59" W x 24" D x 84 1/2" H. Wt.: 50 lbs.

Model No. PE206
Price/Each \$

Sorter Support Bracket:

Fits onto T-uprights or straight uprights. Adjustable in height along uprights. 1 3/4" W x 17" D x 5" H. Wt.: 5 lbs.

Model No. FF347 Price/Each \$